



24 Tilbury Avenue Stanhope Gardens NSW

4 🛏 2 🚿 2 🚗

This exquisite two-story family residence graces a generous 389.2sqm (approx.) block in a serene neighbourhood, perfect for families. It offers an abundance of living space, a family-focused design, and a location that's just a 3-minute drive from Kellyville Metro Station.

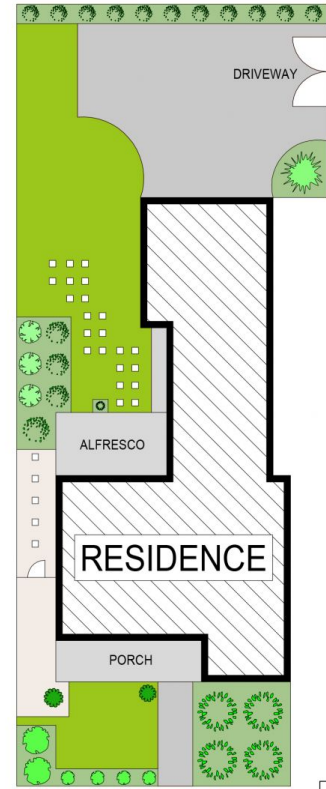
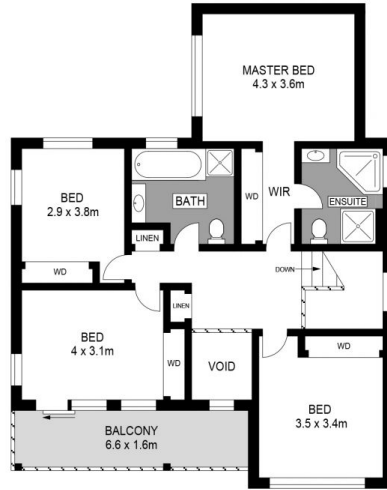
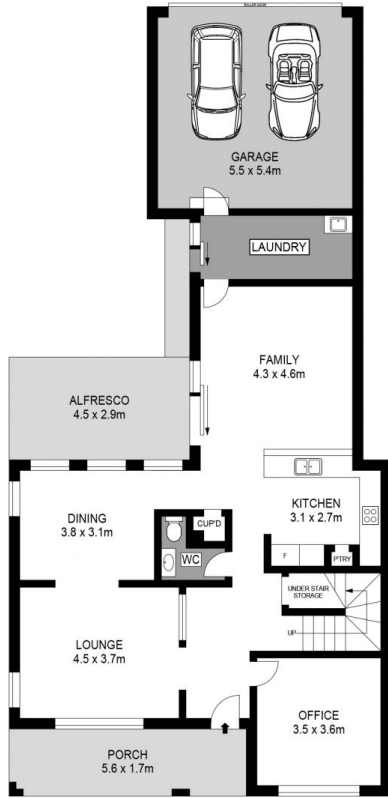
Inside, you'll discover four well-appointed bedrooms, each with built-in wardrobes, serviced by an expansive family bathroom equipped with a freestanding bathtub, separate shower, and a spacious vanity. The master suite is a haven of space and convenience, featuring a substantial built-in wardrobe and a private ensuite.

The property offers fantastic community amenities, including a sparkling pool and a well-maintained tennis court. Residents can enjoy a vibrant and active lifestyle right at their doorstep, whether it's a refreshing swim on a

Price : \$ 1,391,000
Land Size : 389.2 sqm
View : <https://www.jensenestateagents.com.au/sale/nsw/western-sydney/stanhope-gardens/residential/house/7774889>



Marguerite Farmer (Jensen)
8824 6111



24 Tilbury Avenue, Stanhope Gardens