






**5 Nest Hill Approach North Kellyville NSW**

4  2  3 

This 2-year-old custom built home is not the typical find in the sort after suburb of North Kellyville. Upon entry you will be immediately impressed with the quality and detail. Showcasing a commanding street presence on the high side of the street, this property exudes modern luxury living at its finest. Offering superior finishes, an intelligent and functional floor plan, substantial size, sparkling in-ground pool, sprawling frontage, privacy, spacious and low maintenance outdoor entertainment areas and so much more. No expense has been spared to create one of the suburbs finest properties.

**Land Size** : 600.1 sqm  
**View** : <https://www.jensenestateagents.com.au/sale/nsw/hills/north-kellyville/residential/house/6487347>

Features include:

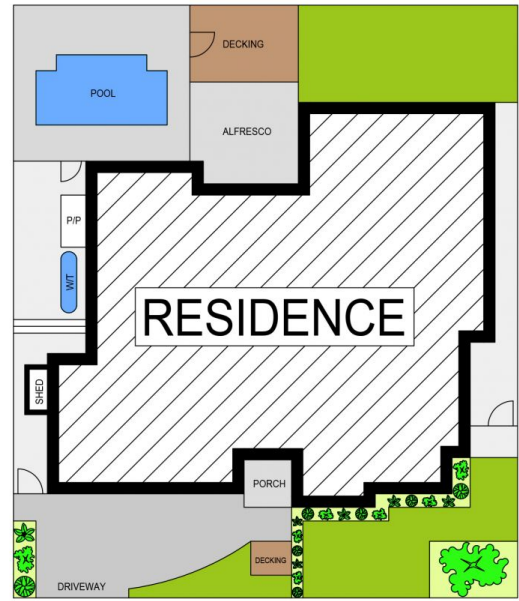
- \* Gourmet kitchen with island granite bench, quality ilve appliances & 900m induction cooking
- \* Butler's pantry with secondary wash area



**Marguerite Jensen**  
8824 6111



**Lucy Jensen**  
8824 6111



SITE PLAN (NOT TO SCALE)



5 Nest Hill Approach, North Kellyville